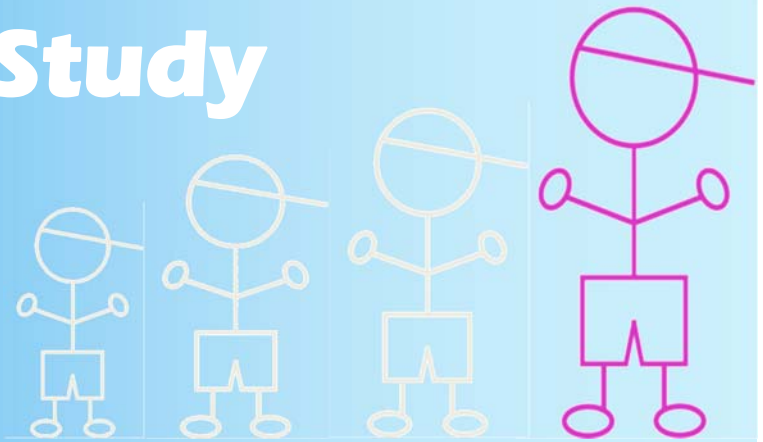


# PREDICT CP Study

Comprehensive Surveillance  
to Predict Outcomes for  
Children with CP



## Can you help us?

The **Queensland Cerebral Palsy and Rehabilitation Research Centre** is excited to announce the **con-**  
**tinuation of the CP Child study** to follow-up all children in Queensland with cerebral palsy born **be-**  
between 1<sup>st</sup> January 2006 and 31<sup>st</sup> December 2007 at 8-9 years of age.

The study will measure your child's brain development and physical capacity, growth, physical activity, communication, cognition and educational outcomes. Information from the study will help many children with cerebral palsy and their families in the future. This project will provide comprehensive assessment of outcomes that will inform the development of timely and effective interventions and predict future outcomes for children with cerebral palsy.

## Benefits

Your child will receive comprehensive surveillance of their growth, nutrition and physical activity (including gait analysis, and bone health), communication and language skills, and cognitive/intellectual functioning and estimated academic achievement. All information will be reported back to you after the visit and the results sent to your child's paediatrician and therapists to keep them informed of your child's progress.

Your child will be offered the opportunity to have a brain MRI. This may be helpful for providing advice about the cause of the cerebral palsy. The formal report of the scan by the radiologist will be given to you and the results will be forwarded to your child's treating Paediatrician/ Rehabilitation Doctor.

## What's Involved?

A one-off assessment at age 8-9 years. The comprehensive assessments will be conducted across 2 days. Support for travel and accommodation may be provided for families travelling from regional and rural Queensland or interstate.

If you would like to find out more about either study please contact either:

**Naomi Westwood**, Study Coordinator PREDICT, (07)36465542,  
[n.westwood@uq.edu.au](mailto:n.westwood@uq.edu.au)

**Professor Roslyn Boyd**, Scientific Director, QCPRRC, 0434608443,  
[r.boyd@uq.edu.au](mailto:r.boyd@uq.edu.au)



Lady Cilento Children's Hospital, Raymond Tce/ Graham St, South Brisbane QLD 4101

Ph 07 36465538 | Email [qcprrc@uq.edu.au](mailto:qcprrc@uq.edu.au)

Queensland cerebral palsy & rehabilitation research centre